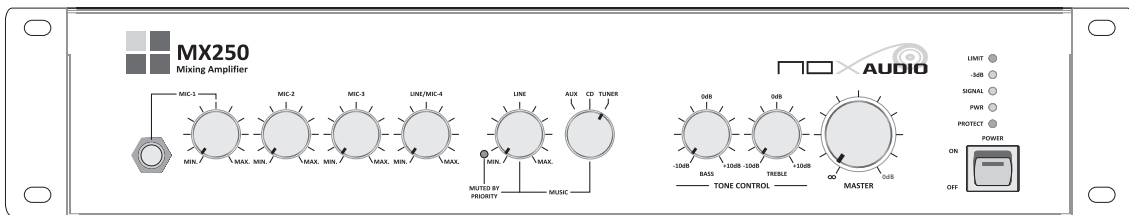
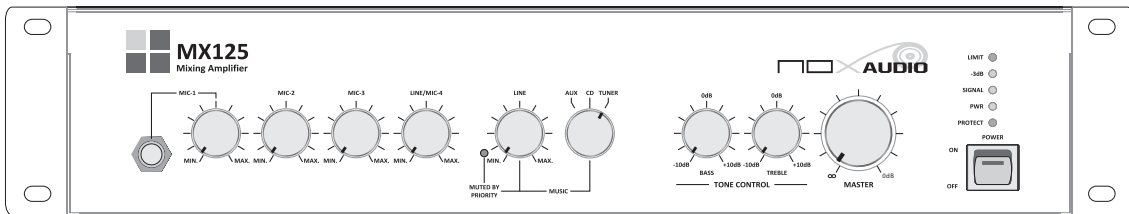




ENGLISH

# MX125 MX250 Mixing Amplifier



## IMPORTANT SAFETY INSTRUCTIONS

- 1) Read this manual carefully
- 2) Keep this manual for future use
- 3) Read all warning signs on the machine
- 4) Follow all instructions
- 5) Do not use this apparatus near water
- 6) Clean only with dry cloth
- 7) Do not install this apparatus near any heat sources such as radiation, heat register, stoves, or other electronics apparatus that produce heat
- 8) Do not defeat the safety purpose of the polarized or grounding plug.
- 9) Do not block any ventilation of the apparatus.
- 10) Protect the power cord from being walked on or pinched particularly at plugs.
- 11) Use only the accessories supplied by the manufacturer
- 12) Use only with the cart, stand, tripod, bracket or table specified by the manufacturer
- 13) Service or repair this apparatus by qualified personnel only
- 14) Disconnect the power supply whenever you do not use it for a longer period or during lightning



### Important Mains Plug Wiring Instructions

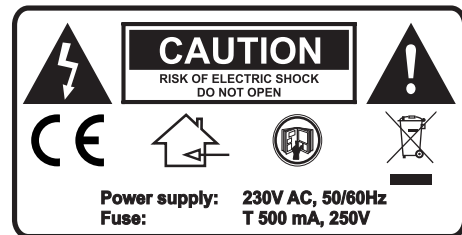
The unit is supplied with a moulded mains plug fitted to the AC mains power lead. Follow the instructions below if the mains plug has to be replaced. The wire which is coloured Green/Yellow or Green must be connected to the terminal in the plug which is marked with the letter E or with the Earth symbol.

#### **This appliance must be earthed.**

The wire which is coloured Blue or White must be connected to the terminal in the plug which is marked with the letter N. The wire which is coloured Brown or Black must be connected to the terminal in the plug which is marked with the letter L.

### HEALTH HAZARD!

The system can produce very high sound pressure level. Use the necessary care to avoid hearing damage when using the product at close distance



## WARNING

TO REDUCE THE RISK OF FIRE OR ELECTRIC SHOCK DO NOT EXPOSE THIS EQUIPMENT TO RAIN OR MOISTURE

### CAUTION

Turn the amplifier on last and off first!

## WARNING

TO PREVENT INJURY THIS APPARATUS MUST BE SECURELY ATTACHED TO THE FLOOR/WALL IN ACCORDANCE WITH THE INSTALLATION IN INSTRUCTIONS

There are no serviceable parts inside this device. Maintenance and service operations are only to be carried out by authorized dealers.

## FEATURES AND SPECIFICATIONS

---

MX Series is designed to meet all the needs of system integrators, in commercial and industrial applications, with extreme flexibility & stable performance, that can be used in a wide range of applications including schools, hospitals, factories, restaurant, cafes, houses of worship, Gymnasium, Retail & A/V. Easily configured for a range of uses such as background music, paging and evacuation.

### FEATURES

- High performance 125 watt and 250 watt 100 Volt Mixing / Amplifier
- Bass & Treble controls.
- Integrated speech filters.
- Three level priority system.
- Operates with 24V DC or 115 V / 230V AC.
- Four microphone inputs, Four selectable line inputs plus one emergency line / Telephone.
- 24V priority output, activated by contact closure.
- Short, overheat & DC protection.

### SPECIFICATIONS

#### Inputs Connectors:

MIC 1:  
Balanced 1/4" Jack (Front) & NEUTRIK XLR / DIN5 (Back)  
MIC 2 & 3:  
Balanced NEUTRIK COMBO XLR / 1/4" Jack.  
MIC 4:  
Balanced NEUTRIK XLR (1.5 mV).  
14V phantom power via on-off switch at back panel  
AUX: Gold plated RCA cinch (500 mV)  
CD: Gold plated RCA cinch (500 mV)  
Tuner: Gold plated RCA cinch (300 mV)  
LINE4: Gold plated RCA cinch (200 mV)  
Emergency input: Euro block (1V)

#### Outputs Connectors:

Pre-amp out: Gold plated RCA cinch (1V)  
Record out: Gold plated RCA cinch mono (1V)  
Speakers: Euro-block 4 Ohm – 8Ohm -50V - 70V - 100V

#### Power output:

MX125  
125W @ 40hm –80hm- 50V - 70V – 100V  
MX250  
250W @ 40hm –80hm- 50V - 70V – 100V  
Priority output: 24V, activated by contact closure

#### Priority system:

Level 1:  
Emergency / Tel: Euro-block (200 mV), mutes all inputs  
Level 2:  
VOX Mute: On MIC 1 (0.6 mV), mutes MIC 2,3 & 4 and line inputs. Level set by trimmer  
Level 3:  
Contact Closure: Mutes all line inputs  
Chime: 2-tone chime activated by contact closure on Euro-block or DIN5. adjustable volume

#### Tone control:

Bass: ±10 dB - 100 Hz  
Treble: ±10 dB – 10 kHz

#### Frequency response:

25 Hz - 22 kHz

#### Signal to Noise ratio:

> 99 dB, 22 Hz - 22 kHz

#### Line S/N Ratio:

Better than 86 dB, 22 Hz - 22 kHz

#### MIC S/N Ratio:

Better than 74 dB, 22 Hz - 22 kHz

#### Total Harmonic Distortion: < 0.2%

#### Dimensions (H x W x D):

89 x 483 x 307.5 mm (3½ x 483 x 12 inch)  
(Detachable 19" brackets included)

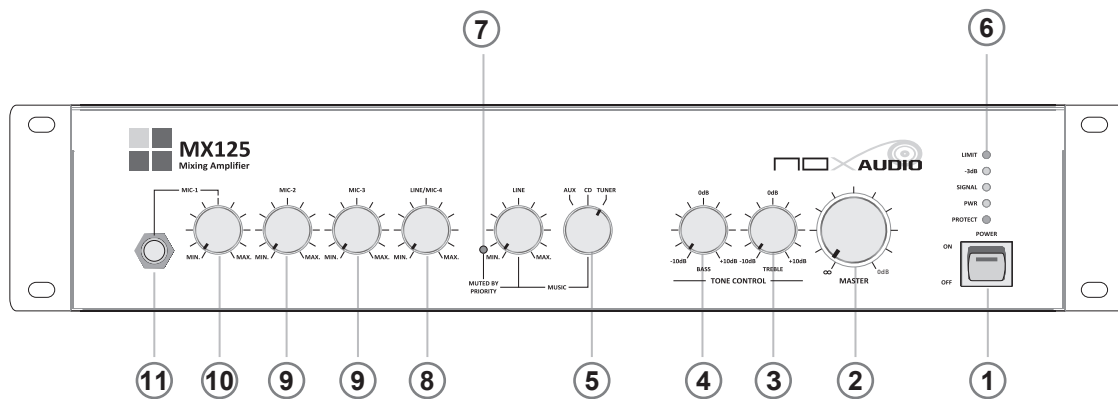
#### Power supply:

115v and 230v selectable plus 24 V

#### Weight:

MX125 : 9.6 Kg (21.16 lb)  
MX250 :10.2 Kg (22.49 lb)

## CONTROLS AND CONNECTIONS



### 1. POWER SWITCH

Switching the apparatus On or Off

### 2. MASTER VOLUME CONTROL

Control the volume level of the signal output of the amplifier

### 3. TREBLE LEVEL CONTROL

Control the high frequency level for the signal

### 4. BASS LEVEL CONTROL

Control the low frequency level for the signal

### 5. LINE SOURCE SELECTOR

Select the music input source from CD, AUX or Tunner

### 6. LEVEL INDICATORS/ PROTECTION INDICATOR

Series of Green LEDs indicating the power on and volume level output. In all circumstance, the output level should be kept under 0 dB. Otherwise the limiter will be activated and the clip indicator Red LED will be lit. Continuous operation in clipping condition may cause permanent damage to the amplifier. Protection indicator in Red LED will be lit once any of the protection circuits against overheat, short circuit, low impedance etc. are activated and therefore the amplifier audio outputs will be muted.

### 7. PRIOR LED

Red LED indicating prior input activated with signal going through the prior input contact

### 8. MIC 4 / LINE 4 LEVEL CONTROL

Control the volume of microphone connected to MIC 4 neutrik combo connector or line input from the LINE 4 RCA jacks

### 9. MIC 2 / MIC 3 LEVEL CONTROL

Control the volume of MIC 2 or MIC 3 inputs respectively

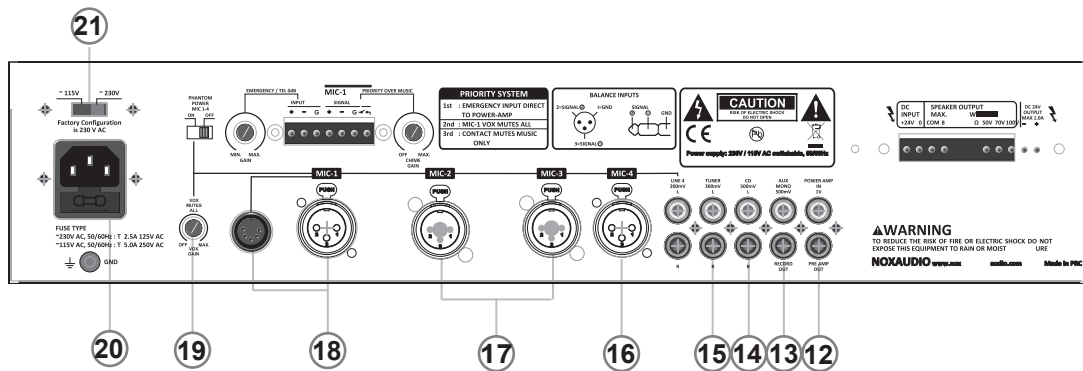
### 10. MIC 1 LEVEL CONTROL

Control the volume of MIC 1 inputs (phone jack MIC 1, Euroblock, Din5 or Neutrik Combo)

### 11. PHONE JACK MIC 1

Connect microphone by 6.3mm phone jack. MIC 1 channel had the first priority over any other sources except emergency input by trimming the VOX mutes all trimmer

## CONTROLS AND CONNECTIONS



### 12. POWER AMP IN / PRE AMP OUT

Signal in from external device such as equalizer or processor to amplifier thru the POWER AMP IN input. Connect additional PA amplifier by signal coming out from the PRE AMP OUT. IF the functions not being used, shortening of the caption two RCA connectors is required

### AUX MONO / RECORD OUT

**13.** Signal input from AUX MONO RCA. Mixing signal can be obtained from the RECORD OUT RCA to any recording device such as tape, MD recorder etc. The RECORD OUT signal had not been controlled, so signal levelling device required for connection to MIC input of other device

### 14. CD INPUT

Connect to CD player with the stereo RCA, the signal will be summed to mono signal

### 15. TUNNER INPUT

Connect to Tuner with the stereo RCA, the signal will be summed to mono signal

### 16. MIC 4 / LINE 4 INPUT

Either MIC 4 or LINE 4 can be connected at a time. Balanced XLR or phone jack input is required for MIC 4 neutrik combo connector. If you use a wireless microphone, please use this input channel for better performance

### 17. MIC 2 / MIC 3 INPUT

Connect microphones to these XLR or phone jack inputs

### 18. MIC 1 NEUTRIK COMBO / DIN 5 INPUT

Connect microphone to the neutrik combo by balanced connection or paging mic by DIN 5 input. MIC 1 had the first prioty over any line input except emergency input. Music will be muted whenever any signal going into this channel by VOX mutes all trimmer

### 19. VOX MUTES ALL

Control the MIC 1 priority over any line input except emergency input. Tune the level to be prior to line input or turning off this function by full counter-clockwising the trimmer

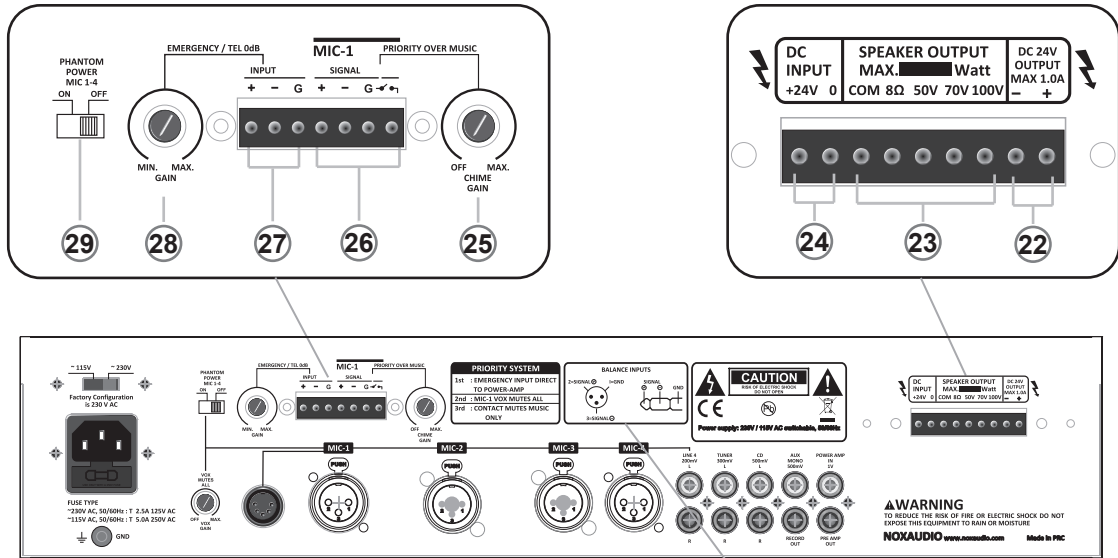
### 20. MAIN POWER SOCKET

Connect to IEC type power cord provided. The socket contain of a 6.3AT fuse for protection. Refer to qualified personel for replacement of the fuse

### 21. VOLTAGE SELECTOR

115Vac or 230Vac selectable for this selector, the amplifier default setting is 230Vac. Make sure the voltage should your city voltage supply.

## CONTROLS AND CONNECTIONS



### 22. PRIOR DC 24V OUT

24V DC will be provided (max.1.0A) from this output terminal for activation of relay device like volume control

### 23. SPEAKER OUTPUT CONNECTORS

Connect 4ohm or above speaker from COM- and 4ohm+, or volt speakers from COM- and 50V, 70V or 100V+ according to the volt connected. Only one of the above connection should be connected and make sure the minimum impedance match the connection

### 24. EMERGENCY POWER SUPPLY

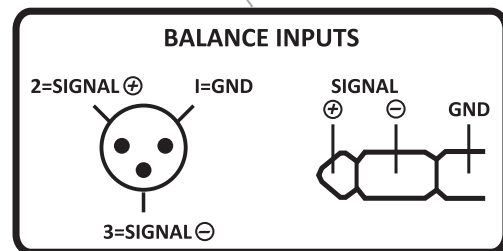
Connect the amplifier with a battery or external power supply in 24V DC, 20A for emergency use

### 25. PRIORITY OVER MUSIC

Control the level of priority over music output from the input of MIC 1 Euroblock signal

### 26. MIC 1 SIGNAL INPUT

Connect microphone by balanced cable for MIC 1 input, Shorting the contact will activate the microphone priority and the 24V DC will be delivered to the PRIOR DC 24V OUT(22)



### 27. EMERGENCY / TEL INPUT

Connect to emergency message or telephone audio output for emergency broadcasting, this is the very first priority of the amplifier

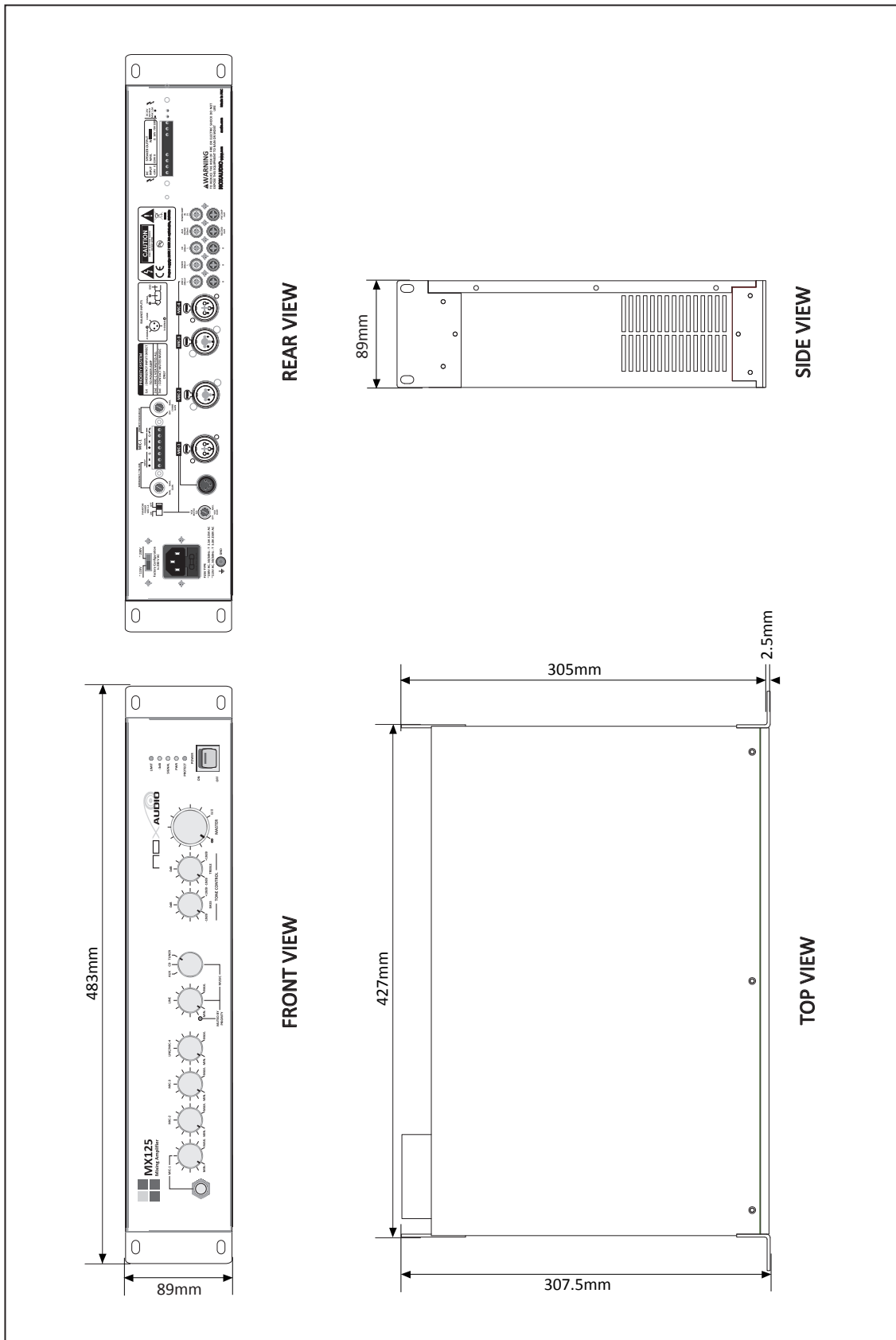
### 28. GAIN CONTROL FOR EMERGENCY / TEL

Control the volume of emergency / tel input

### 29. PHANTOM POWER

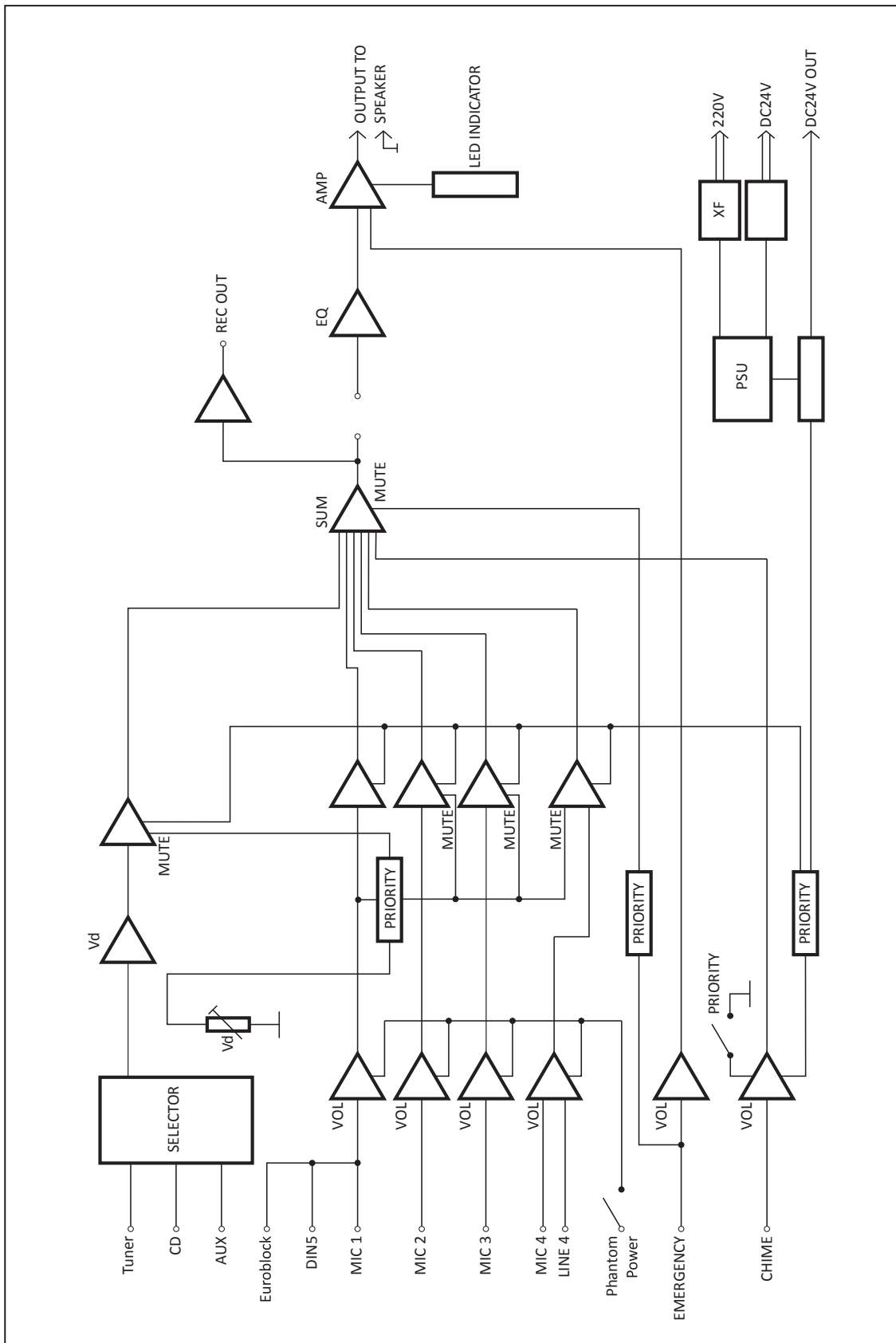
When using condenser microphone for the input of MIC 1-4, switching this button on will provide 48V phantom power to the channels

# DIMENSION DRAWING



MX125 and MX250 have the same dimensions

# BLOCK DIAGRAM





## WARRANTY

---

NOX Audio products are protected by 1yr warranty from factory faults, the buyer must keep the original purchase invoice with the model number, serial number and date of purchase from the authorized dealer of NOX Audio to enjoy the warranty.

To obtain the warranty service, the buyer should contact the local NOX Audio dealer with the description of problem on the product and provide the invoice and serial number of the product.

Any repair service for defects after the warranty period will be charged according to local dealer's service and parts charges.

If the products are modified or adapted in order to comply with some safety standards in a national or local level in any country which is not originally developed and manufactured by NOX Audio, the status will not be considered a factory fault.

Free inspection and maintenance/repair work are excluded from this warranty, in particular, if caused by improper handling of product by user and normal wear and tear.

Damage/defects caused by the following conditions will not be covered by this warranty:

- Improper handling, neglect or failure to operate the unit in compliance with the owner's manual provided with the products.
- Connection or operation of the product in any way that is not complying with the technical or safety regulations in the country where it is used.
- Damage/defects caused by force majeure or any of the conditions that is beyond the control of NOX Audio.
- Any repair or opening of the unit carried out by unauthorized personnel including the user will void this warranty.

If the defected product inspected by the local dealer shows the defect in question is not covered by this warranty, the repair and inspection cost will be payable by the buyer.

The warranty does not exclude or limit the buyer's statutory rights provided by law in the country where it is used since the law in different countries for warranty regulations are different. For more details of this warranty, please contact your local dealer.

## **Nox Audio**

E [sales@noxaudio.com](mailto:sales@noxaudio.com)

W [www.noxaudio.com](http://www.noxaudio.com)

Copyright © Winter, 2019, Nox Audio by Syncrotek Holding. All rights reserved. Due to constant improvement of products, all or some specifications are therefore subject to change without prior notice.



**Technical Department**  
[techsupport@noxaudio.com](mailto:techsupport@noxaudio.com)